

Space Cam Status

ARISS 2006

Miles Mann WF1F

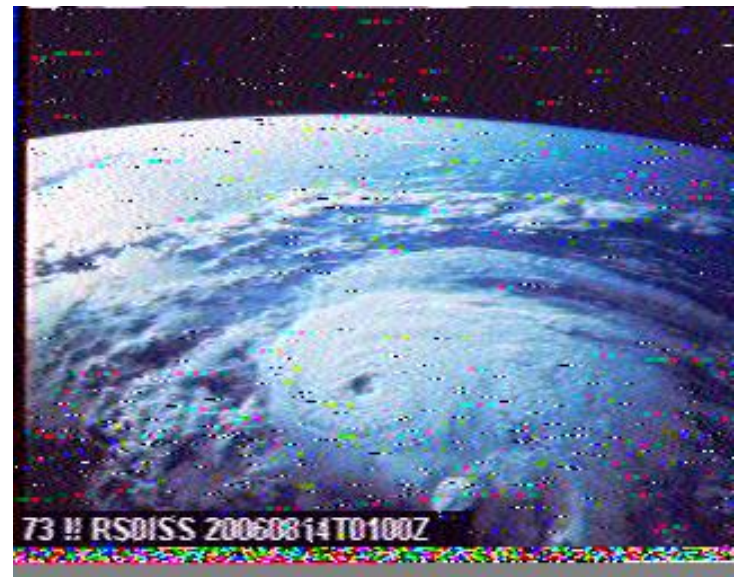
Marex-MG

October, 2006

Space Cam Activated

- Software on ISS and activated in July 2006
- Pavel borrowed a PC and used his spare time to get SSTV running
- Received over 12 different images.
- Space Cam transmitted 30 images per hour for many hours.
- 300+ images sent to earth

SpaceCam Image



Good News coverage

- MSNBC Alan Boyle, good story
- Many other new and web links
- We did not give any real public notice and still generated lots of good press

Issues

- Crew did not have proper instructions for enabling the D700 to support SSTV
- SpaceCam Slide show mode was configured for 1 minute, instead of the recommended 3 minute delay
- The D700 over heated and shutdown in mid image over Australia
- Space Cam and Packet have been shutdown

Issues

- Pavel said the D700 fan does not seem to work. (spins when you blow on it)
- The VOX box hears some stray audio can causes the D700 to transmit most of the time.
- The PC used for Space Cam needs to be tested and settings documented.

Goals for Marex

- It is very important that Marex perform end to end testing of the Space Cam project
- Need, Flight PC and a flight version of the D700 with flight software
- Will be able to complete testing in 2-3 weeks.
- Need a dedicated flight PC